



CHECKMATE™ PRO

Inline Label Verification System



CHECKMATE PRO

WHO WE ARE

The CheckMate™ Vision line of label verification systems are developed and manufactured by ClearView Imaging Ltd, a machine vision specialist based in Oxfordshire, UK.

OUR LABEL VERIFICATION SYSTEM

Our highly skilled team, working closely with our customers, has created a fully flexible label verification solution for the food and packaging industry.

This solution ensures that critical inspections are performed on 100% of the packs produced on your packaging and labelling line.

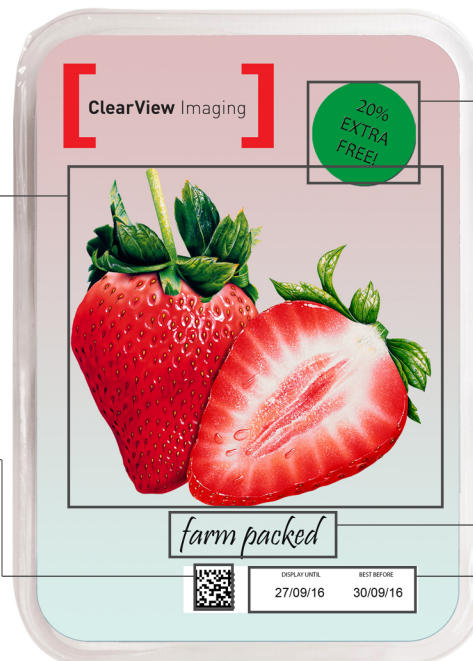
INSPECTION CAPABILITIES

Label Verification

Inspection for presence, printing quality and position to ensure pack conformity

1D/2D Barcode Verification

Check presence and quality of barcodes. Smart cross-validations between barcode data and printed data



Inspection Flexibility

Intuitive and flexible operator interface to create new bespoke inspections: Price, Flash Label, Weight, Country of Origin, Sale Price, etc

Print Verification

Verifies alpha-numeric text and special characters ensuring quality of critical information

Date and Time Verification

Verifies best before data to ensure expired and non-complying products are rejected from the line



ClearView Imaging Ltd,
Unit 4, Thame Park Business Centre,
Wenman Road, Thame, Oxfordshire, OX9 3XA



+44 (0) 1844 217270



+44 (0) 845 606 0458



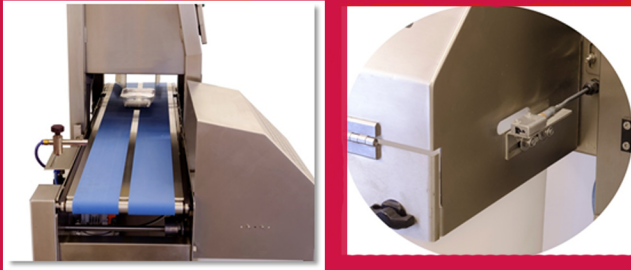
www.checkmatevision.com



CHECKMATE PRO

KEY BENEFITS

Air Nozzle Reject and Bin Full Sensor



The system includes a real time reject air nozzle and a lockable reject bin to store all the rejects detected by the system

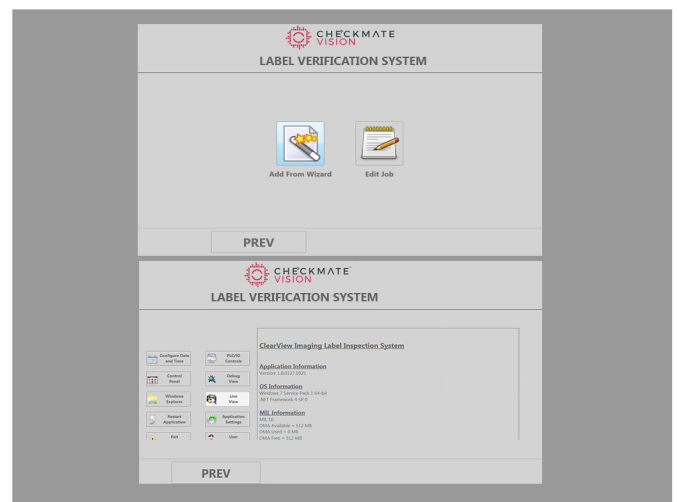
- Eliminate customer returns and fines for mislabelled products
- Avoid human errors
- Reduce labour costs
- Protect brand reputation
- Meet regulatory labelling requirements
- Comply with retailers' code of practices for labelling

MAIN SPECS

| | |
|--------------------------|----------------------------------|
| P/N CHECKMATE-PRO-1-CAM: | 1 camera, top or bottom labels |
| P/N CHECKMATE-PRO-2-CAM: | 2 cameras, top and bottom labels |
| Electrical Supply: | 230VAC single phase, 16A |
| Compressed Air: | 6 bar, non-lubricated |
| Conveyor height: | 850mm |
| Dimensions: | 700 x 500 x 850 W x D x H mm |

EASY INTEGRATION

- Extensive reporting features
- Integrates with ERP, MES & other systems
- Simple to use operator interface
- Easy training of new pack labels

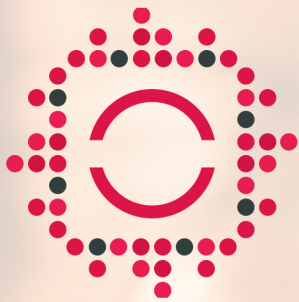


ClearView Imaging Ltd,
Unit 4, Thame Park Business Centre,
Wenman Road, Thame, Oxfordshire, OX9 3XA
 +44 (0) 1844 217270 +44 (0) 845 606 0458
 www.checkmatevision.com

ClearView Imaging Ltd,
Unit 4, Thame Park Business Centre,
Wenman Road, Thame, Oxfordshire, OX9 3XA

 +44 (0) 1844 217270  +44 (0) 845 606 0458

 www.checkmatevision.com



CHECKMATE
VISION